



Carolyn Concepcion | Adarsh Kosuru | Joy Li | Haylee Honggeun Jung

AUTISM



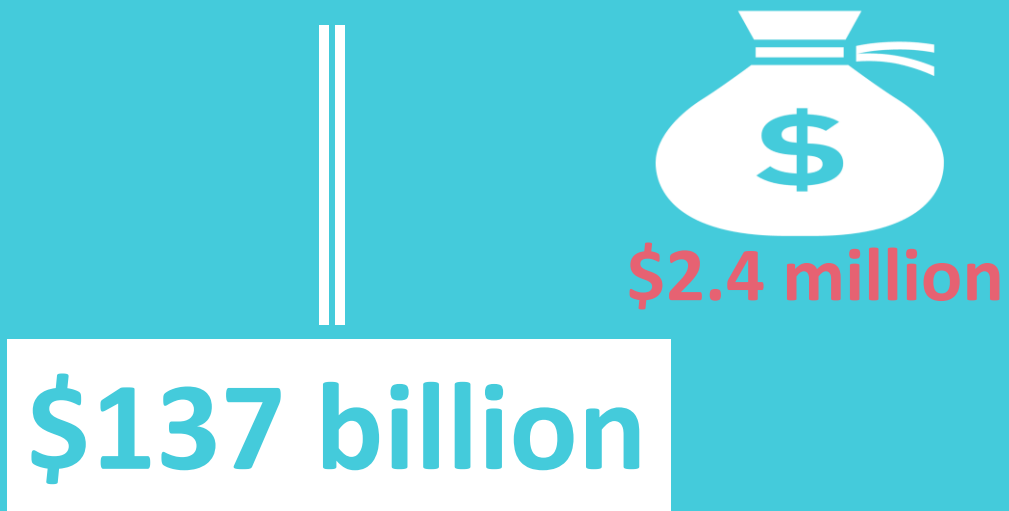
AUTISM APPEARS IN THE FIRST

3 YEARS OF LIFE,

AND **AFFECTS** THE BRAIN'S

DEVELOPMENT OF **SOCIAL**

AND **COMMUNICATION** SKILLS



A young girl with long brown hair, wearing a pink shirt and a blue dress with a green sash, is holding a doll. She has a sad and thoughtful expression. In the background, a person in a white lab coat is holding a red clipboard, suggesting a medical or clinical setting.

MISDIAGNOSIS

IMPACT OF DIAGNOSIS



**EARLY
DIAGNOSIS**



**EARLY
INTERVENTION**



**BETTER
FUTURE**



DESIGN CHALLENGE

How might we help reduce the time spent in detecting autism and improve the accuracy of the diagnosis?

How might we rise to the challenge of designing for a billion sensors to create life changing technologies?

DIAGNOSTIC PROCESS







Repetitive behavior : stimming



Avoiding eye contact



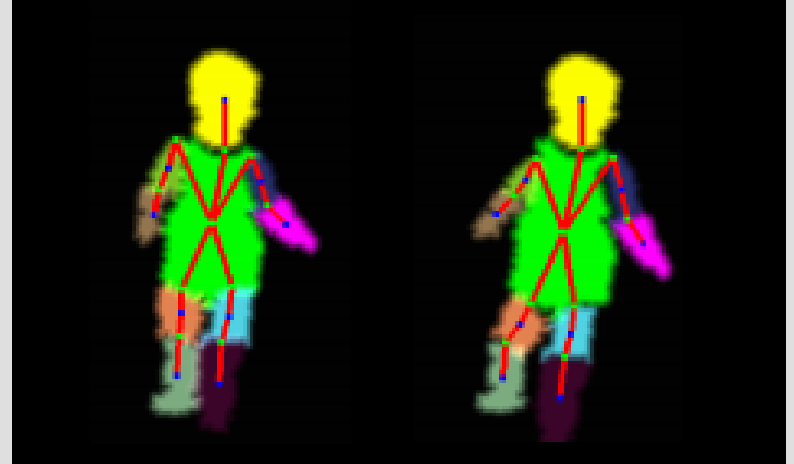
Communication challenges

DETECTION TOOLS



Eye Tracking

University of California - The Autism Center of Excellence



Computer Vision

University of Minnesota

TREATMENT TOOLS



PLEO



AUTI



KEEPON



UBOOLY

OPPORTUNITIES

DIAGNOSTIC TOOL

TREATMENT TOY

bobob



A photograph of Richard Perry, MD, a middle-aged man with grey hair, wearing a dark jacket over a dark shirt. He is sitting at a desk in an office with a brick wall background. He is looking down and smiling slightly. To his left is a desk with a lamp and some papers. To his right is a leather chair. The overall atmosphere is professional and warm.

RICHARD PERRY, MD

Child Psychiatrist

NYU Medical Center

LAURA & TIMMY





Not Social

Lag Behind In Speech



Repetitive Behavior



Avoiding Eye Contact



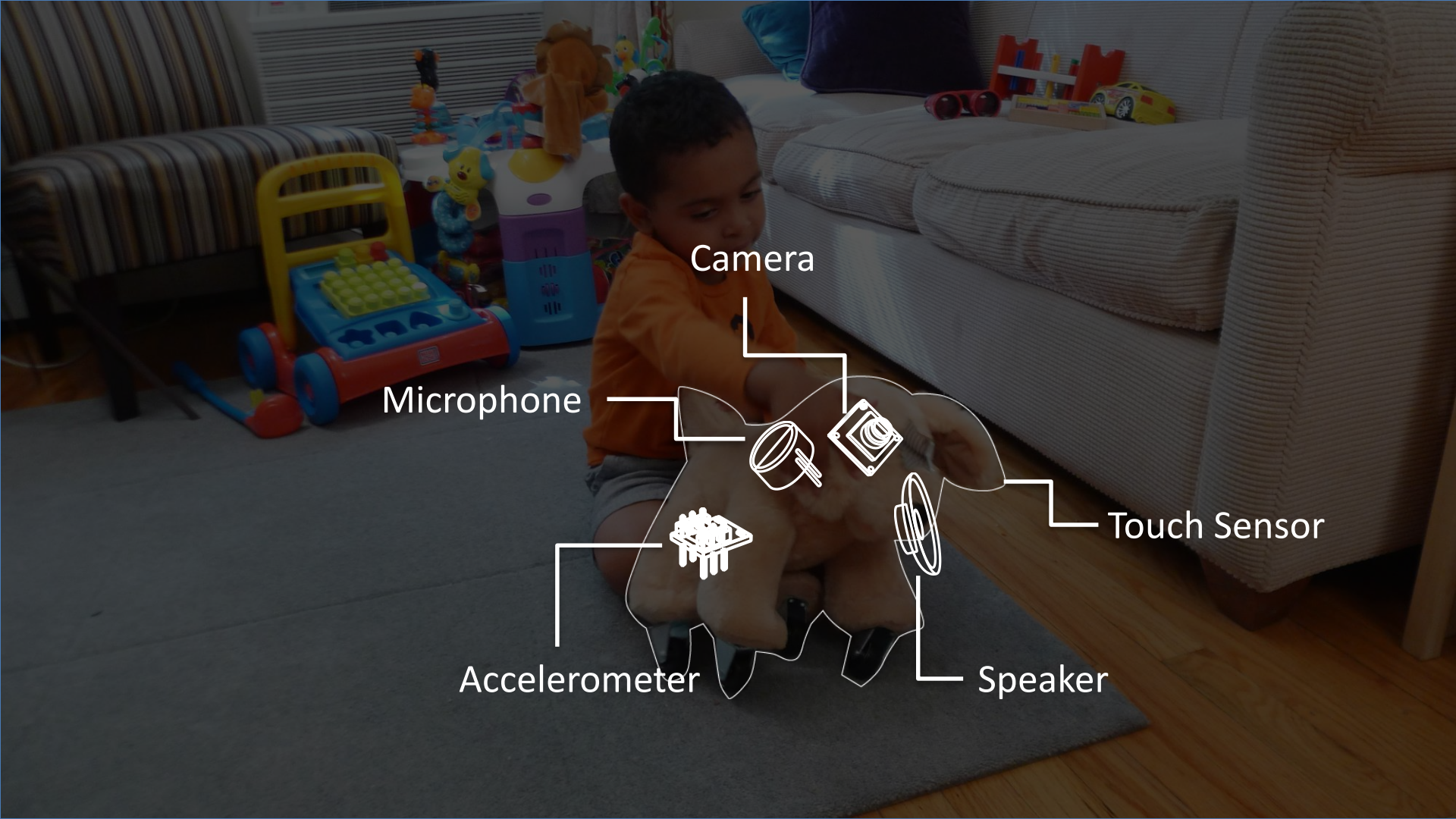
Communication Challenges



bobob







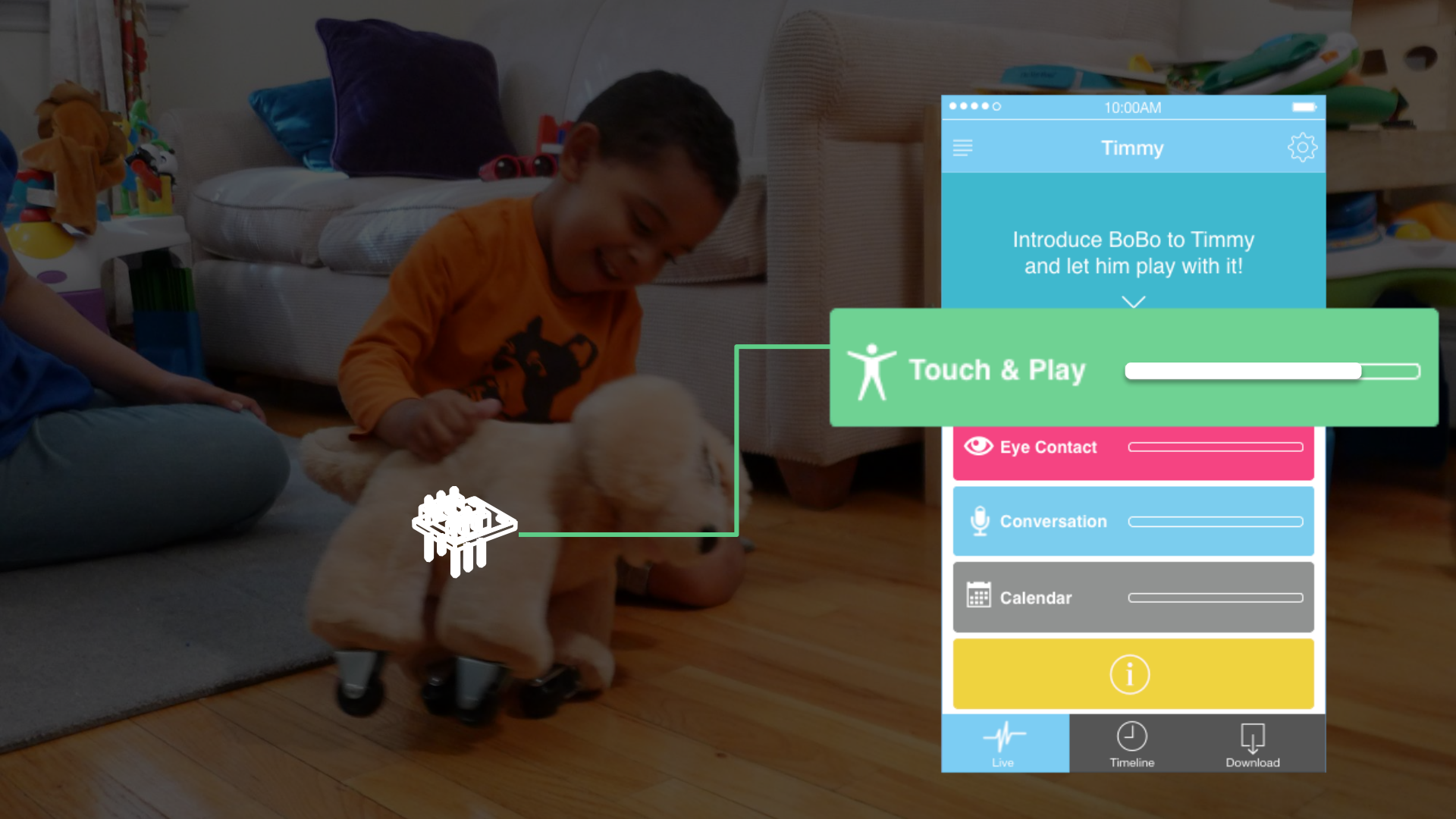
Camera

Microphone

Accelerometer

Speaker

Touch Sensor



10:00AM

Timmy

Introduce BoBo to Timmy and let him play with it!

Touch & Play

Eye Contact

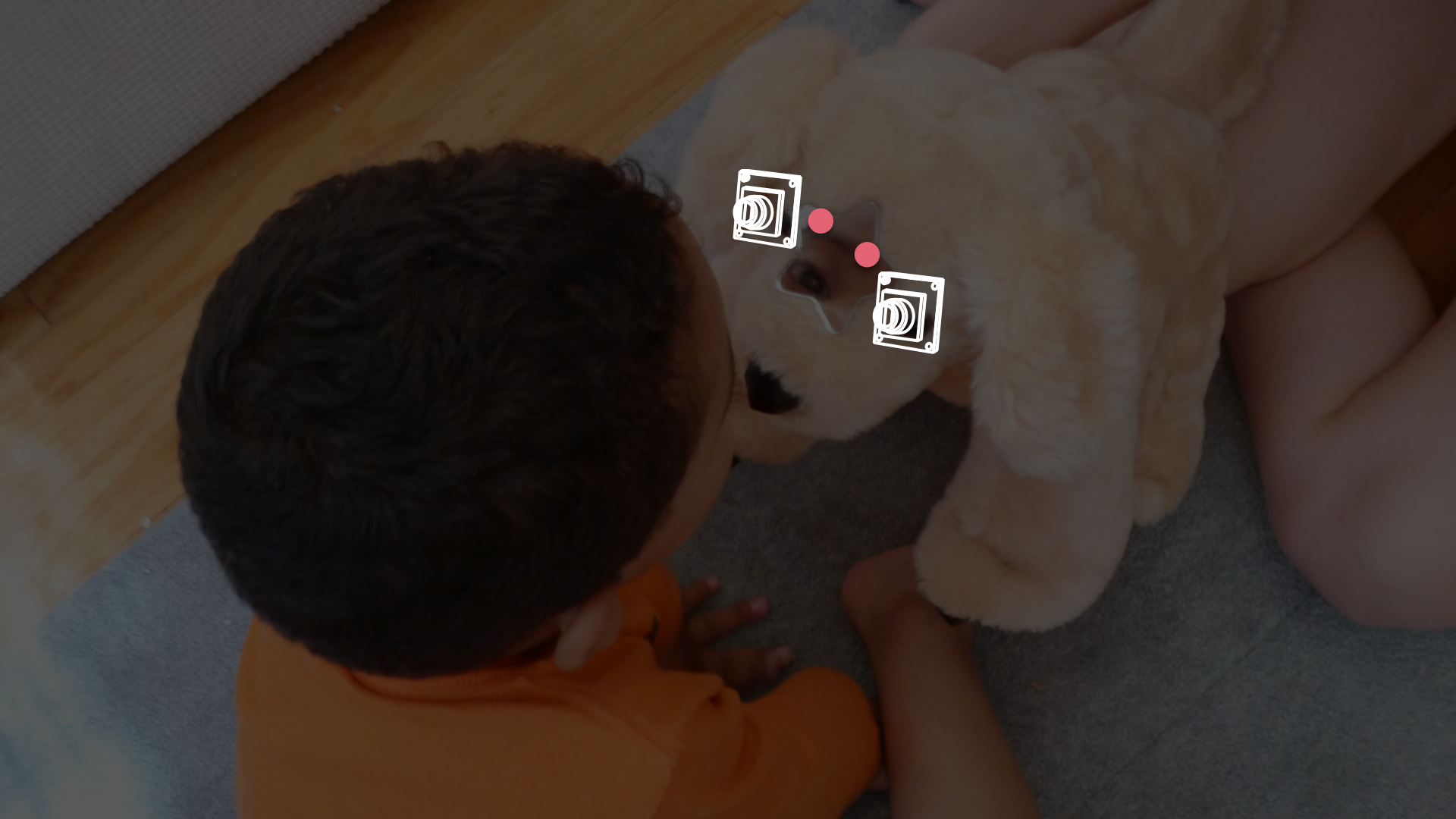
Conversation

Calendar

Live

Timeline


Download



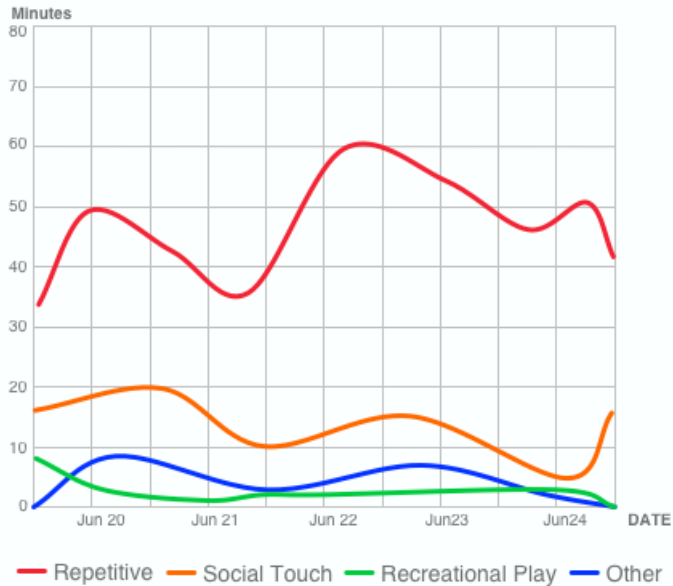




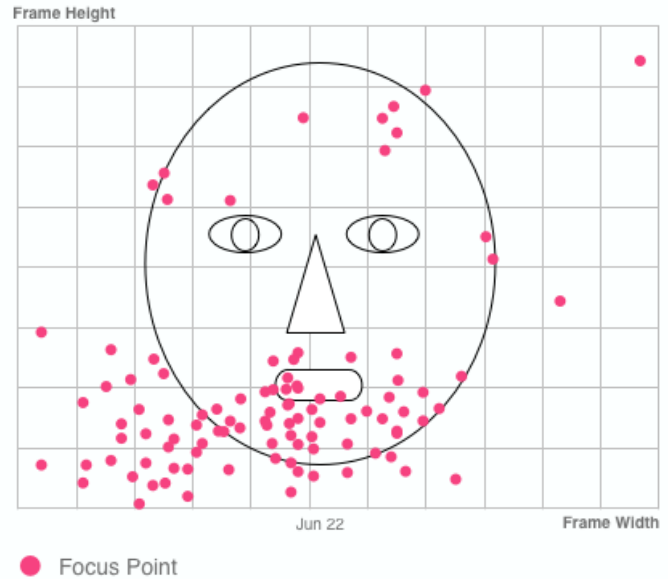
Jun 22nd - Day 3 of 5

	BEHAVIOR	SPEECH	GAZE	NOTES
6am		Hear All 		
7am				

Behavioral Pattern



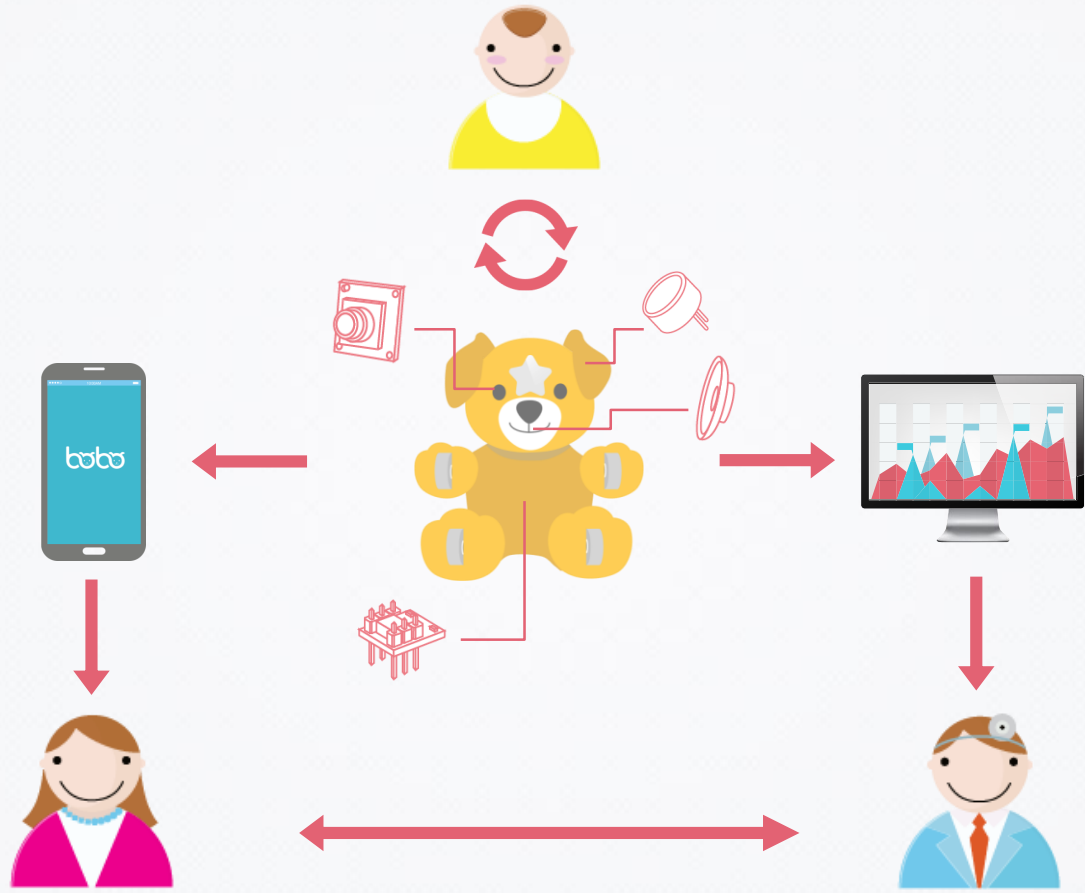
Eye Gaze Pattern



7am	LOOK at mirror Social touch		Mou	
8am				







CONSIDERATIONS

Data collection

Clinical testing

Funding

POSSIBILITIES

Modular

Aggregate data

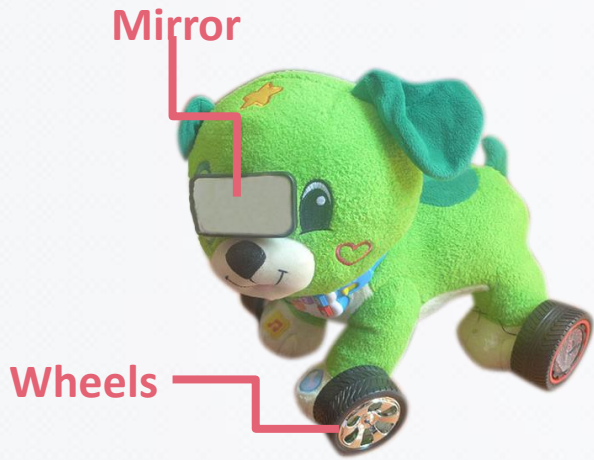
New applications

baboo



baboo

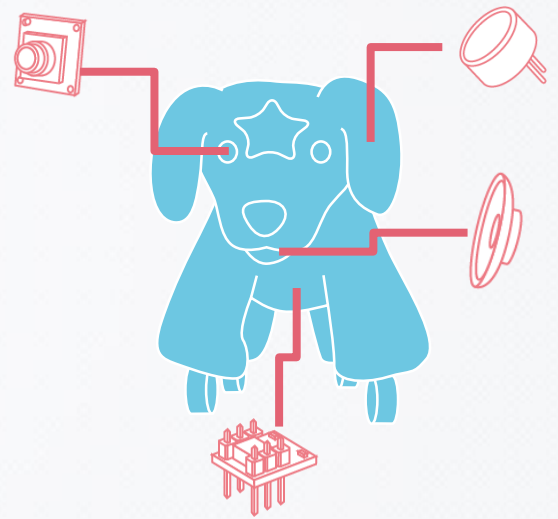




1st
Generation



2nd
Generation



Future
Generation