

BIG DATA

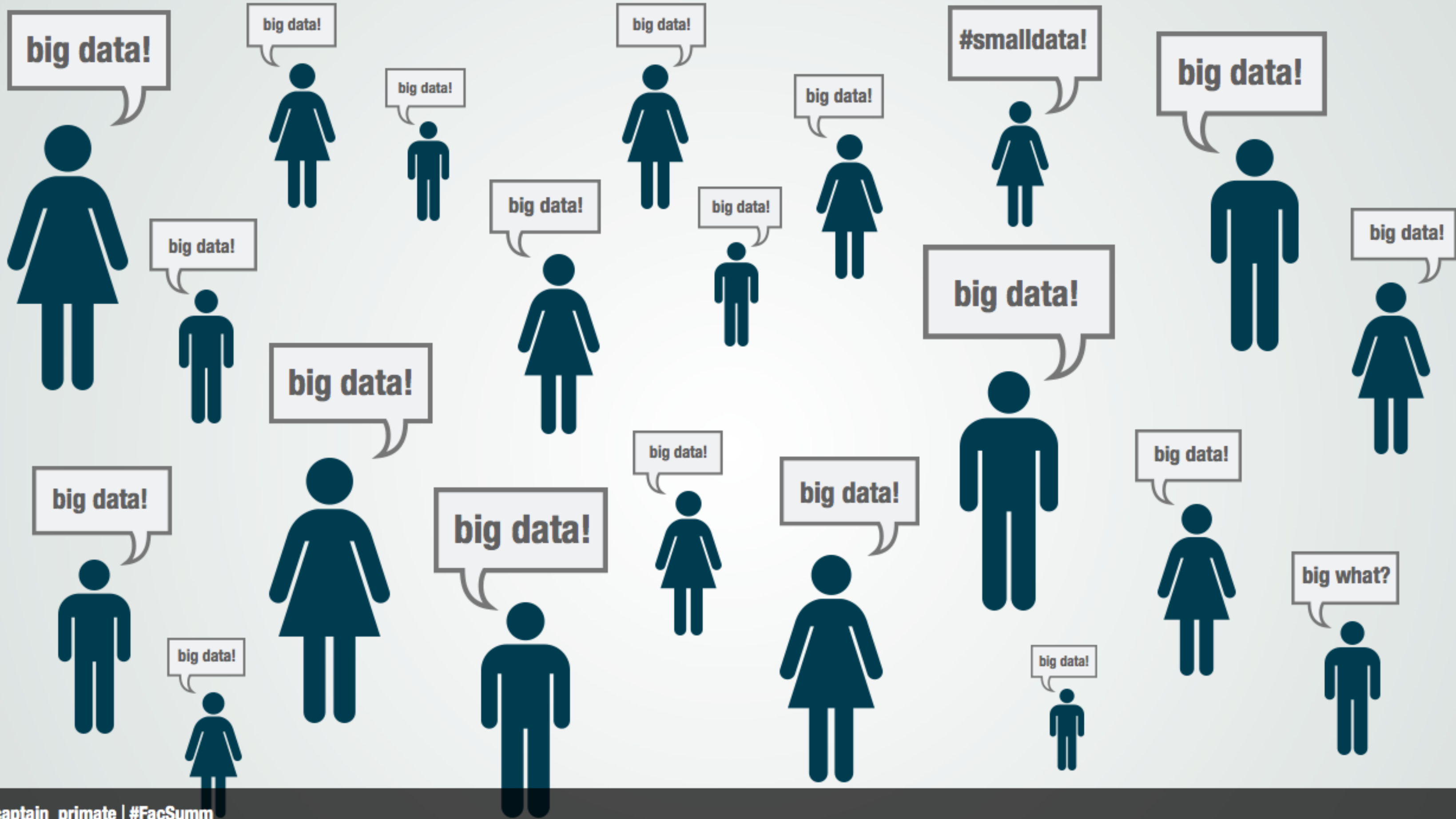
SMALL STORIES

community, collaboration, & user experience in the age of digital cultural heritage



Dr. Ethan Watrall
Department of Anthropology
MATRIX: The Center for the Arts, Letters, & Social Sciences Online
Michigan State University
@captain_primate





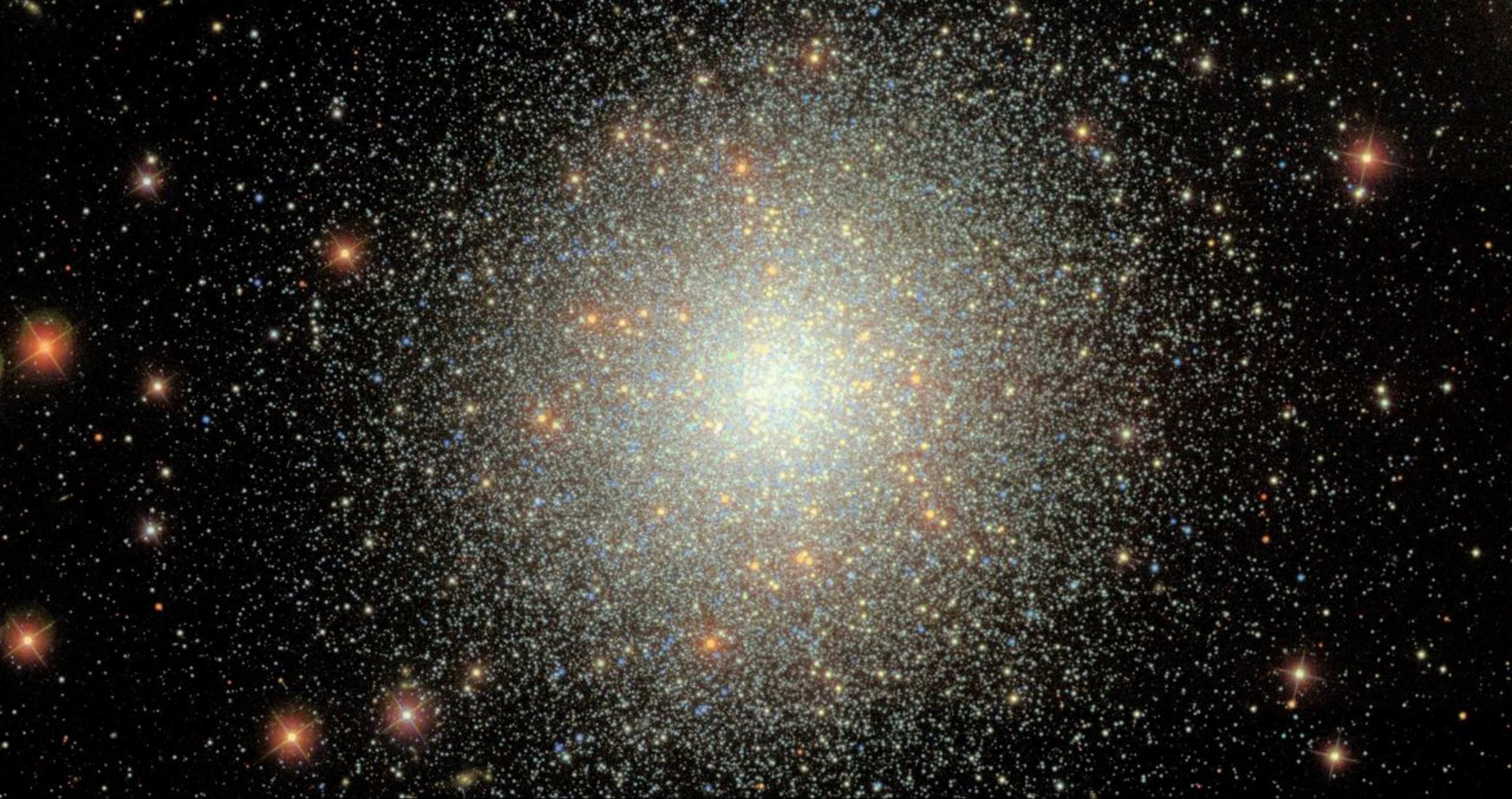
**seriously, what is
big data anyway?**

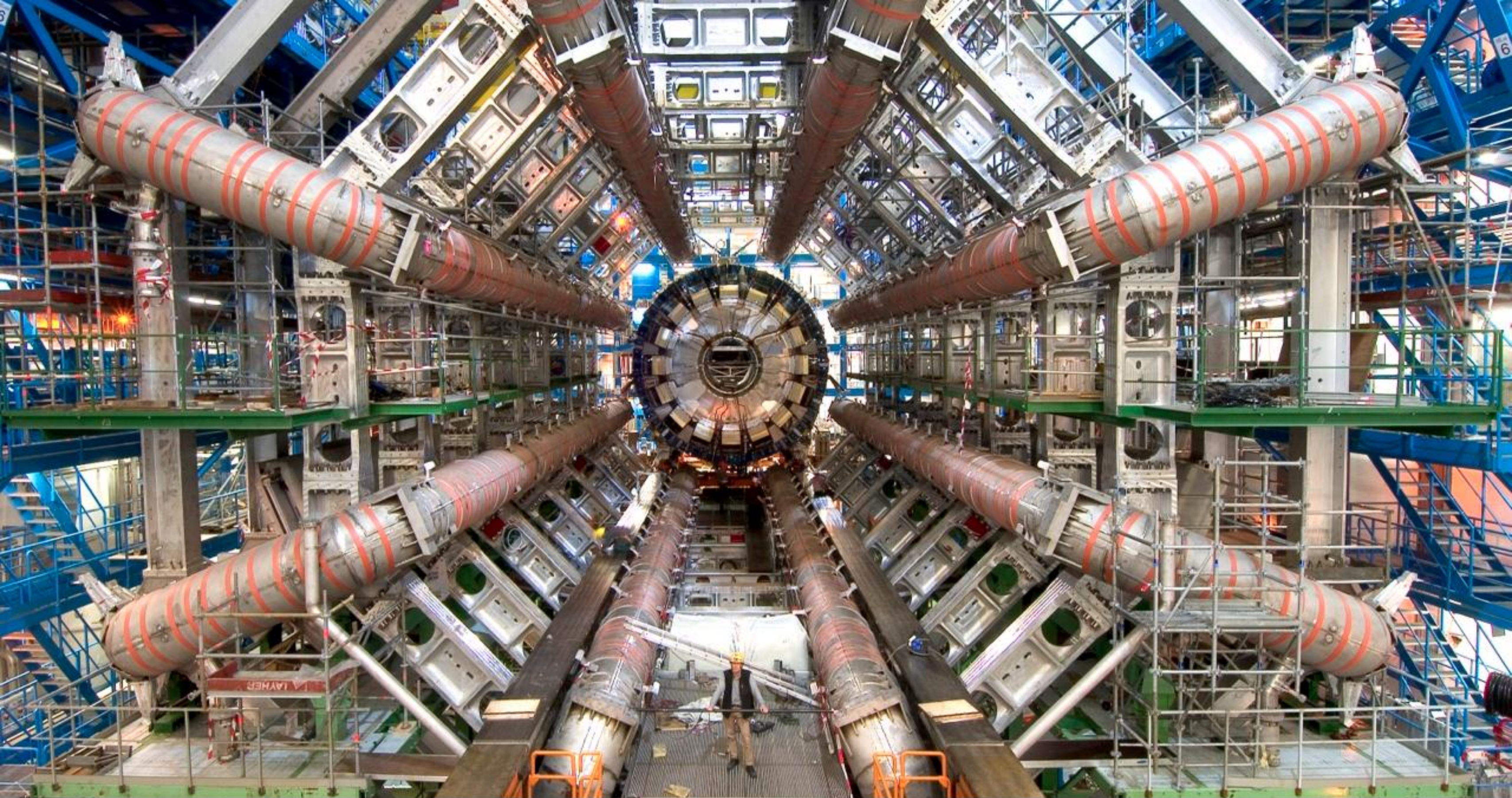




ummm, ok?

BIG DATA: DATA SETS THAT ARE SO LARGE OR COMPLEX THAT THEY BECOME DIFFICULT TO WORK WITH USING TRADITIONAL TOOLS OR METHODS







SOCIAL & CULTURAL

BEHAVIOR

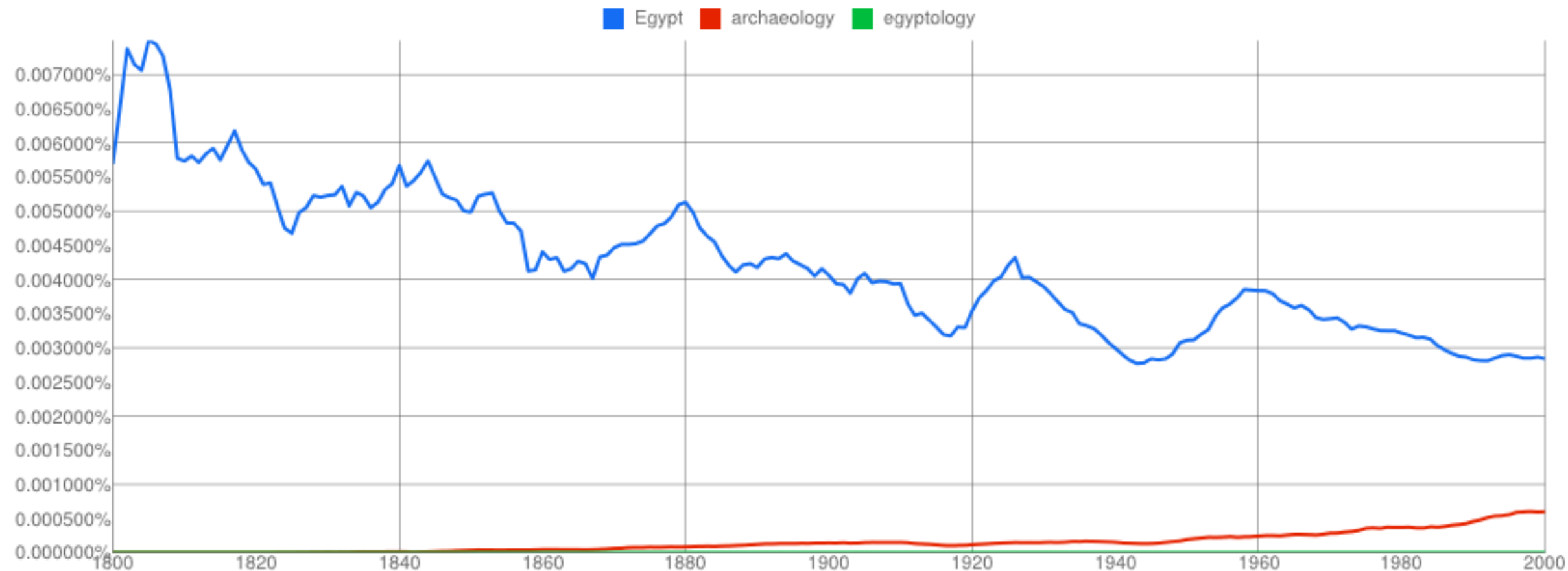
245

Google books Ngram Viewer

Graph these **case-sensitive** comma-separated phrases:

between and from the corpus with smoothing of .

[Search lots of books](#)



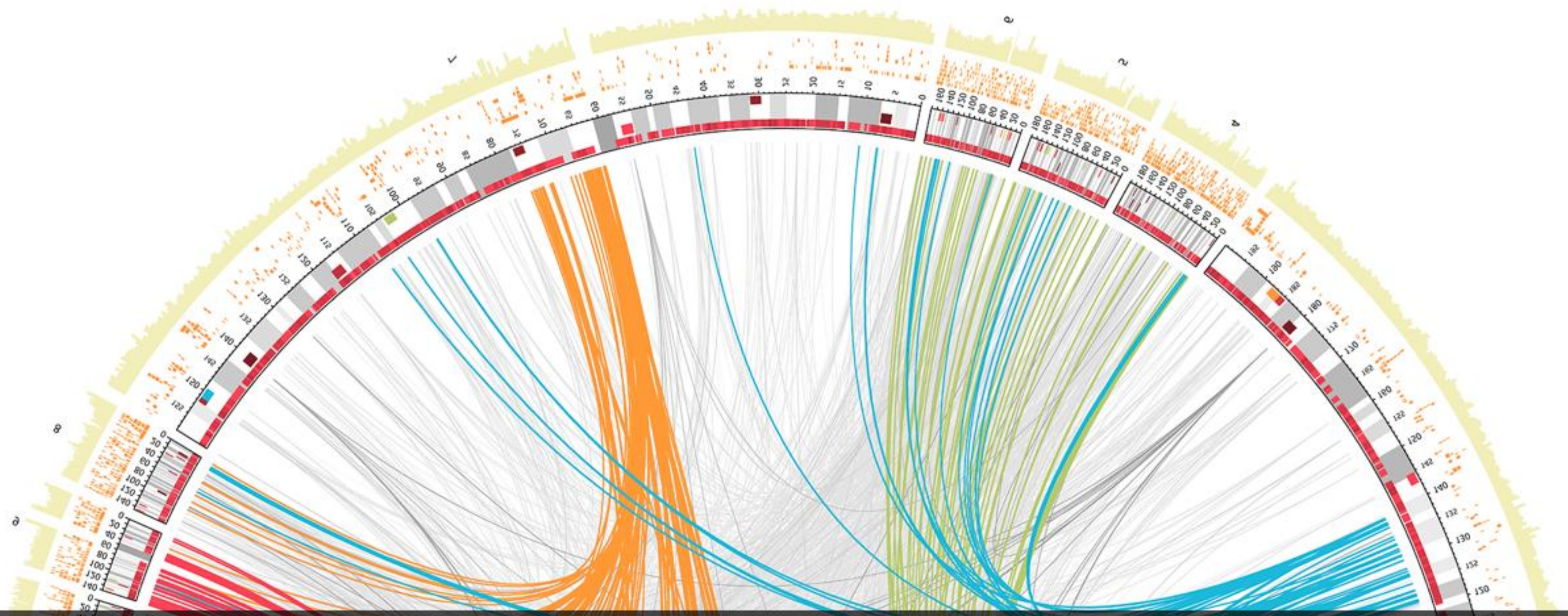
[+1](#) 0
[Tweet](#) 0

Search in Google Books:

1800 - 1889	1890 - 1982	1983 - 1990	1991 - 1995	1996 - 2000	archaeology (English)
1800 - 1812	1813 - 1828	1829 - 1844	1845 - 1974	1975 - 2000	Egypt (English)
1800 - 1883	1884 - 1934	1935 - 1938	1939 - 1998	1999 - 2000	egyptology (English)

Run your own experiment! Raw data is available for download [here](#).

CAN WE DO MORE?



BIG DATA SMALL STORIES



MATRIX

Ethan Watrall

1 QUILT INDEX

quiltindex.org

2 SLAVE BIOGRAPHIES

slavebiographies.org

THE QUILT INDEX

Search Quilt Records

keyword/full-record

[Advanced Search](#)



[Home](#) [About](#) [Collections](#) [Search](#) [Browse](#) [Essays](#) [Galleries](#) [Lesson Plans](#) [FAQ](#) [Contact](#) [Wiki](#) [Blog](#) [Donate](#)



Trip Around the World

Anna David

ca 1920

Mountain Heritage Center

Mobile App

Even in the digital world, quilts provide comfort.

"At a dental appointment last year I looked at quilts in between the dentist's drilling!" reported one app user in our survey this year.

The Quilt Index To Go mobile app features a quilt of the day and endless access to images from the Quilt Index.

New features will include quicker response time and searching directly from the app. iPad and Android versions are coming soon.

For only 99 cents, it's a great way to support the Quilt Index and take it with you wherever you go!



Features



[Quilt Index iPhone/iPad app](#)

Take QI to Go



[Quilt Index Wiki](#)

Museums, listings, add your own



[Collections](#)

Apply with your collection



[Donate](#)

Help QI sustain and grow

More Quilt Index News

[App](#) [Welcome](#)

What's New

[QI Blog:](#)

- [Unknown Applique, berries Laura Ann Hall Nall Kentucky 1850-1875 Kentucky Quilt Project](#)

- [Applique Strawberry Wreath Martha Currie 1930-1949 Connecticut Quilt](#)

[QI Facebook:](#)

- <http://www.quiltindex.org/news/2012/07/12/berries/> More berries. Quilt of the Da...

- [Quilt Index Contributor Event: Don't miss the upcoming lecture and](#)

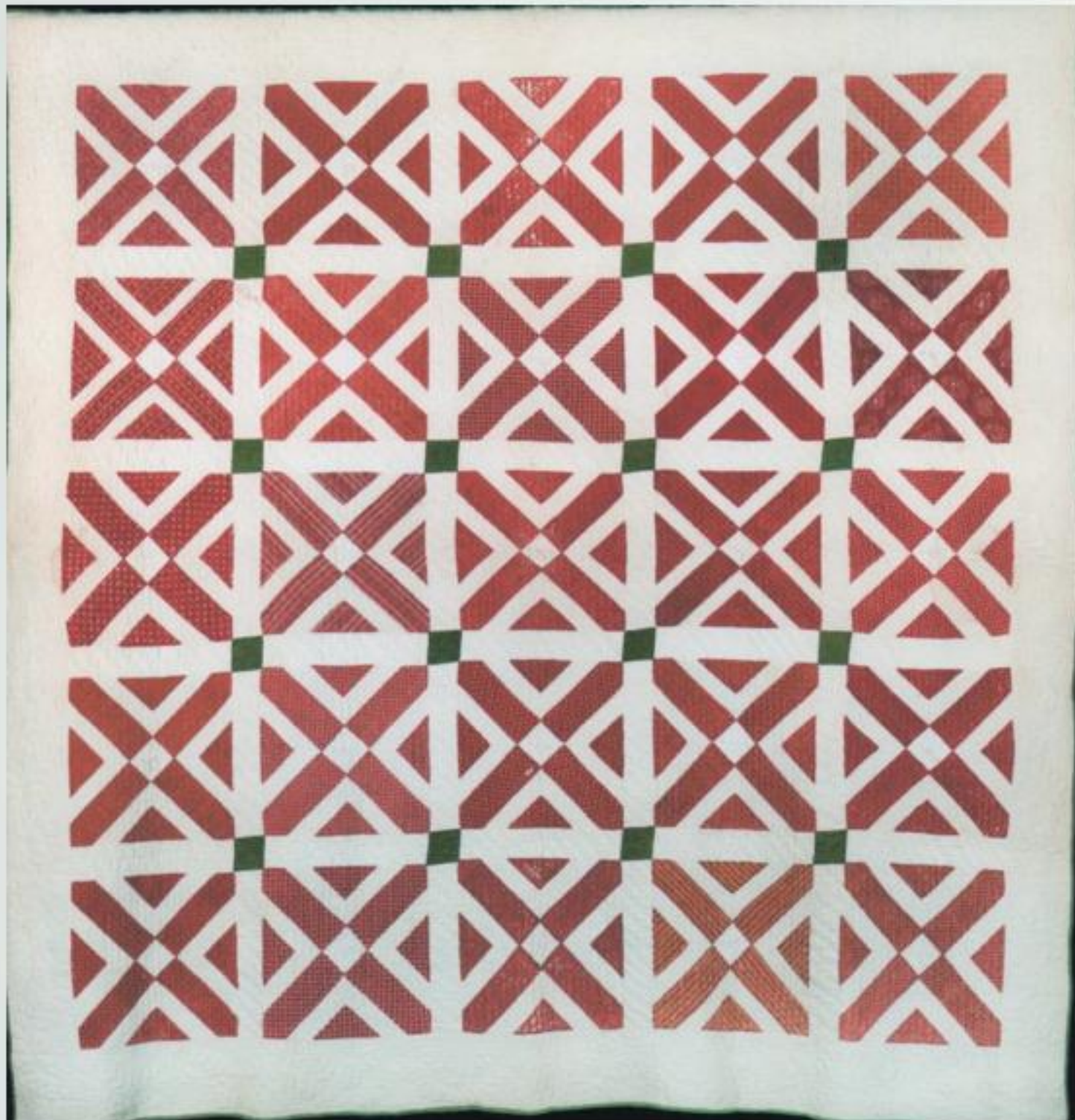
Searches

This Week:

[1930](#), [quilts](#), [traditional](#), [crazy](#), [star](#)



- ★ **40 INSTITUTIONAL CONTRIBUTORS: MUSEUMS, LIBRARIES, ARCHIVES, HISTORICAL SOCIETIES, ETC.**
- ★ **> 70,000 QUILTS IN THE REPOSITORY EACH WITH AS MANY AS 274 UNIQUE PIECES OF METADATA**
- ★ **> 10,000 PIECES OF QUILT EPHEMERA IN THE REPOSITORY (BOOKLETS, PUBLISHED PATTERNS, DIARIES) EACH WITH AS MANY AS 40 UNIQUE PIECES OF METADATA**
- ★ **> 11,000 UNIQUE VISITORS TO QUILTINDEX.ORG EVERY MONTH**

**TITLE:**

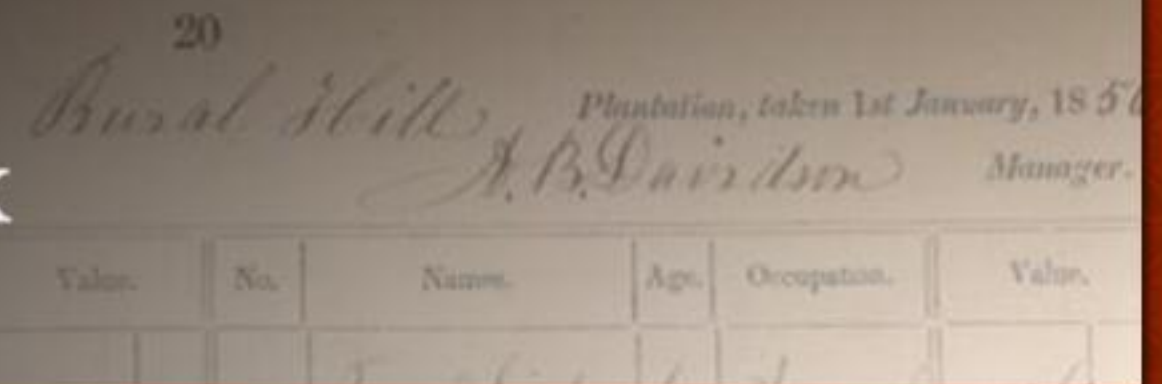
Philena Cooper Hambleton's Quaker Friendship Quilt

DATE: 1853 (before April)

ORAL NARRATIVE:

Made by Philena Cooper Hambleton's female relatives & friends to take to Iowa when she & her husband migrated there from Ohio in 1854. Quilt passed from Philena to her daughter, Angelina Craver, then to Angelina's son, Arthur Hambleton Craver, then to Arthur's daughter, Florence Philena Oberholtzer. It became part of an estate sale in Danville, CA in 1995 when Florence died & was purchased from an antique shop in CA in 2001.

SLAVE BIOGRAPHIES: ATLANTIC DATABASE NETWORK



[HOME](#) [ABOUT THE PROJECT](#) [DATA](#) [BLOG](#) [CONTACT](#) [ACKNOWLEDGEMENTS](#)

Slave Biographies: The Atlantic Database Network is a database of information on the identities of enslaved people in the Atlantic World.

Slave Biographies collates data on individual slaves meticulously collected by researchers over the past 20 years. Reviewed by an Advisory Board of experts, datasets include among other information the names, ethnicities, skills, occupations, and illnesses of slaves. The collections reveal much about slave life in the New World and about African slaves' lives in parts of the Old World.

The initial phase of *Slave Biographies* will establish a best practice methodology for how to structure the database to handle datasets containing descriptions of slaves. Phase I will culminate in a freely accessible website with tools that allow researchers to better visualize and analyze the material in database.



MICHIGAN STATE UNIVERSITY
DEPARTMENT OF HISTORY



NATIONAL ENDOWMENT FOR THE
Humanities

- ★ **DOCUMENTS FROM MULTIPLE NATIONAL SOURCES: FRENCH (1719-1769), SPANISH (1770-1803), AND EARLY AMERICAN (1804-1820)**
- ★ **CORE OF > 100,000 RECORDS (INDIVIDUALS) IN THE REPOSITORY EACH WITH AS MANY AS 100 UNIQUE PIECES OF METADATA**
- ★ **PRIMARY SOURCE DOCUMENTS INCLUDE ESTATE INVENTORIES, PROBATE DOCUMENTS, AND SALES NOT INVOLVING PROBATE**
- ★ **DOCUMENTING THE MOVEMENT OF INDIVIDUALS THROUGH SPACE & OVER TIME & QUANTIFYING KINSHIP BETWEEN INDIVIDUALS**

R U N A W A Y



THE 18th Instant at Night

from the Subscriber, in the City of New-York, four Negro Men, Viz. LESTER, about 40 Years of Age, had on a white Flannel Jacket and Drawers, Duck Trowsers and Home-spun Shirt. CÆSAR, about 18 Years of Age, clothed in the same Manner. ISAAC, aged 17 Years clothed in the same Manner, except that his Breeches were Leather; and MINGO, 15 Years of Age, with the same Clothing as the 2 first, all of them of a middling Size, Whoever delivers either of the said Negroes to the Subscriber, shall receive TWENTY SHILLINGS Reward for each beside all reasonable Charges. If any person can give Intelligence of their being harbour'd, a reward of TEN POUNDS will be paid upon conviction of the Offender. All Masters of Vessels and others are forewarn'd not to Transport them from the City, as I am resolv'd to prosecute as far as the Law will allow.

WILLIAM BULL.

N. B. If the Negroes return, they shall be pardon'd. - 88

Advertisement.

RUN away from my House, in *Richmond County*, some Time in *August* last, a tawney young Negro Fellow, named *Will*, very likely, and sensible for a Slave. He lived for many Years at *Rippon-Hall*, near *Williamsburg*, and was removed on Account of his ill Behaviour; it is supposed he went to *Rippon*, and carried off with him a young Negro Wench, named *Sarah*, his Sister, and that they are gone to the Eastern-Shore with a Fellow named *Peter*, belonging to one *Lee* (or *Leigh*) on *York River*, who had been indulged by his Master to work abroad.

Whoever will secure the said *Will* and *Sarah*, so that they be delivered to me in *Richmond County* aforesaid, shall have Five Pounds Cash, besides what the Law allows.

October 7, 1758.

LONDON CARTER.

The Digital Repository and Publishing Platform

" KORA makes data management easy and accessible... "

[Learn more](#)



Multimedia Repository

KORA is an open-source, database-driven, online digital repository application for complex multimedia objects (text, images, audio, video) created by MATRIX. The application ingests, manages, and delivers digital objects with corresponding metadata that enhances the research and educational value of the objects. KORA's flexible architecture can accommodate any metadata scheme allowing for individualized digital collections with differing contents and metadata structures.

Features



Input data from diverse sources

KORA has a flexible input model allowing data from text, images, other files (pdf, tiff, png, doc, etc).



Create custom input forms easily

KORA has many presentation options for use during input, tailored by the user.



Data integrity

KORA makes sure the files you input into the system do not change.



Use for multiple projects & purposes

KORA has a built in permission system to define what projects and what actions in a project users are allowed to access.

BUILDING
COMMUNITY
AROUND

BIG DATA

QUILT INDEX

Community of institutional contributors, community of lay scholarly contributors (quilts & research), significant social media presence (Facebook & Twitter)

SLAVE BIOGRAPHIES

Community of scholarly contributors (both raw data and dialog around data sets & best practices), eventual interaction with repository by general public and stakeholders.

navigation

- [Quiltindex.org](#)
- [Main Wiki](#)
- [All pages](#)
- [New pages](#)
- [Random page](#)
- [Popular pages](#)
- [Recent changes](#)
- [Community portal](#)
- [Current events](#)
- [File list](#)
- [Help](#)

search

toolbox

- [What links here](#)
- [Related changes](#)
- [Special pages](#)
- [Printable version](#)
- [Permanent link](#)

Main Page

Welcome to the wiki! This section of the Quilt Index is built on a wiki technology, which allows registered users to help build this resource. If you have information to update this wiki, please contact us so we may create an account for you. Once your account has been activated, you can sign in and contribute to this growing resource. (You may also send directly edits to Quilt Index staff <http://www.quiltindex.org/contact.php>).

There are currently *333 pages* included on this wiki.

Quilt Index staff have brought together information from a variety of sources and set up resource areas for:

- [Quilt Documentation Projects](#) and Oral Histories
- [Quilt Collections](#), including museums, libraries, archives, and historical societies in the U.S. and around the world
- [Quilt Resources for Educators and Historians](#), including [Quilts & Curriculum](#), [Resources for Quilt Historians](#), and much more
- [Quilts & Social Media](#), with links to quilt blogs, apps, and social networks
- [Contributor Resources](#), a page for contributors of quilt records to the Quilt Index, as well as those working with QI staff on a project such as the [Signature Quilt Pilot Project](#) or our authored materials

We look forward to your feedback and contributions. Please join us!

Contents [hide]

- 1 [Quilt Documentation Projects and Oral Histories](#)
- 2 [Quilt Collections](#)
- 3 [Quilt Resources for Educators and Historians](#)
- 4 [Quilts & Social Media](#)
- 5 [Contributor Resources](#)
- 6 [Getting started](#)

Quilt Documentation Projects and Oral Histories

Quilt Documentation Projects

Documentation projects are indexed alphabetically by geographic location (state, province or country). Information was initially compiled from a variety of sources including Quilt Index staff contacts, contributions from documentation project leaders, www.quiltindex.org/~quilti/wiki

BUILDING
USER
EXPERIENCES

AROUND

BIG DATA





**ONLY POSSIBLE
WITH...**

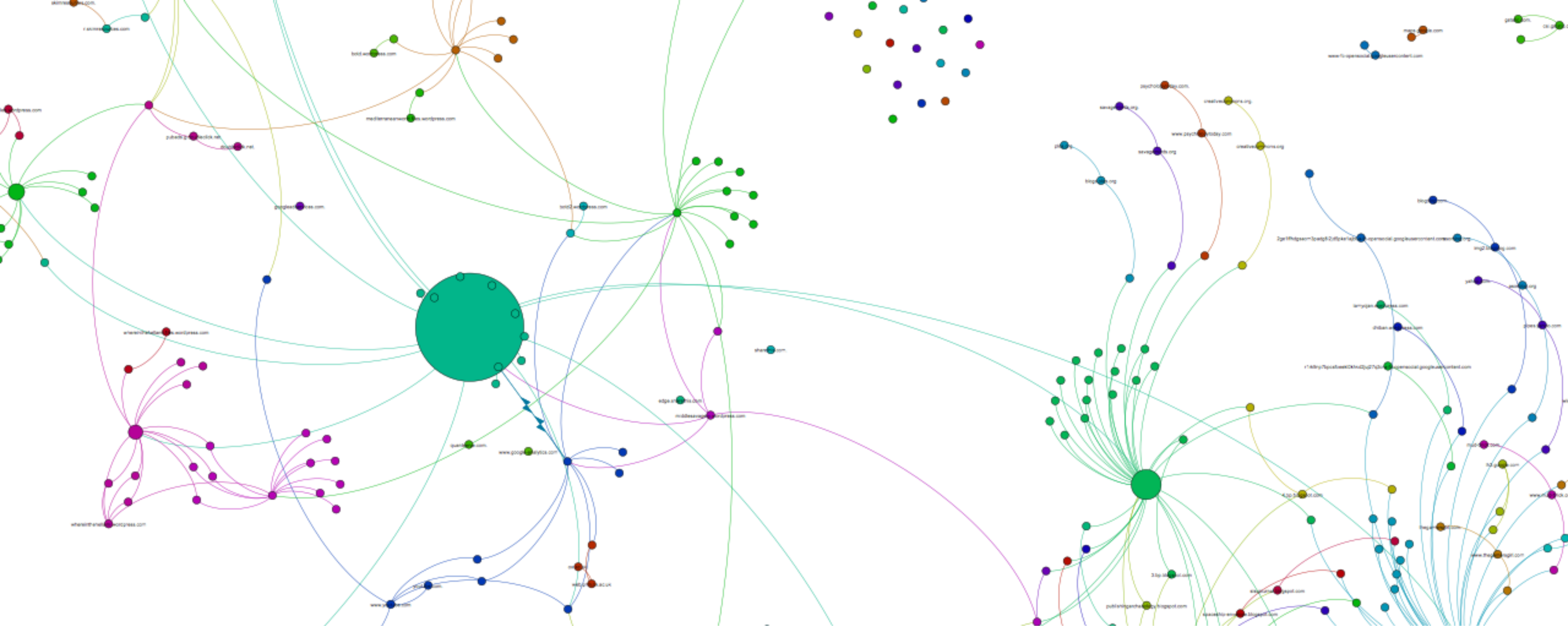


OPEN

silos = bad

(a grain solo, just in case you didn't know)





interdisciplinary & connected

culture of sharing



FIN

QUESTIONS?



Dr. Ethan Watrall
Department of Anthropology
MATRIX: The Center for the Arts, Letters, & Social Sciences Online
Michigan State University
@captain_primate