

**Microsoft®**



Microsoft®

# Research Faculty Summit 2012

ADVANCING THE STATE OF THE ART

# Semantic Technology Enabled Information Revolution



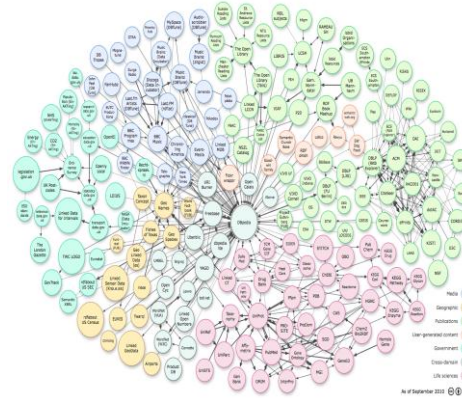
Deborah L. McGuinness  
Tetherless World Senior Constellation Chair  
Professor of Computer and Cognitive Sciences  
Rensselaer Polytechnic Institute (RPI)  
dlm @ rpi . edu



July 16, 2012

# Landscape: Information 24x7

- Smart devices abound
- Ubiquitous connectivity
- Open Data explosion
  - linked data, social web, ...
- Instrumented self; instrumented world
  - Fitbit, Zeo, energy-smart homes, ... supportive
- New publication models
  - Provenance explosion (e.g, GCRP ->),
  - Connections to datasets, interactive annotated figures,
  - Free access to scientific research ( British in 2 yr)
- Distributed, pervasive, entertainment
  - E.g., movies, books, social collaborative entertainment...



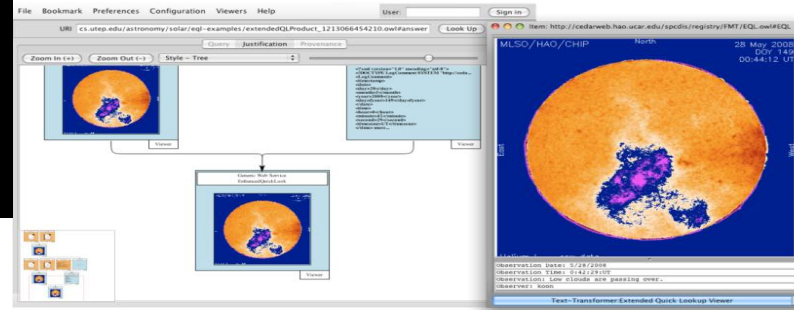
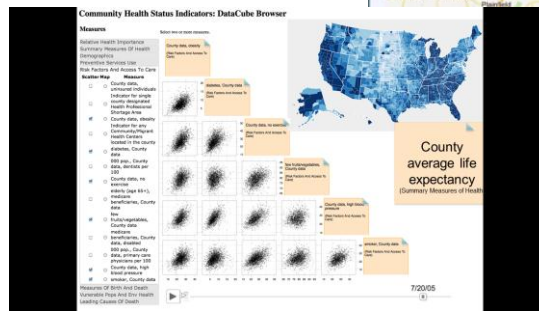
One in three smartphone owners use apps before they get out of bed (*Ericsson ConsumerLab, 2011*)



- Need smart assistants that recommend and explain

# Semantic Technologies and Next Gen Information

- Context-aware, Personalized Mobile Assistants
  - e.g., semantic sommelier, semantic concierge, Siri, now the microsoft assistant, ..
- Semantic eEverything
  - Semantic environmental monitoring
  - Virtual Observatories
  - Citizen Science
  - Linked Data Explosion
- Next Gen Semantic Enablers – creating actionable services
  - Explanation, e.g., Inference Web
  - Provenance-aware X
  - Data Explorers / Content-aware visualizers
  - Privacy Assistants
  - Conversion / integration tools
  - Distributed Collaborative ontology environments
  - Technical bridges / work arounds...
    - Open / closed world issues, sameasIssues, ...



# Future Interaction Paradigms:

college students, info workers, elderly of tomorrow interactions

Cognitive Assistants: Observes, Organizes, Learns, Recognizes, Anticipates, Alerts, Protects

Context/ Situation-aware / Personalized Advocates

Advanced Directive Assistant

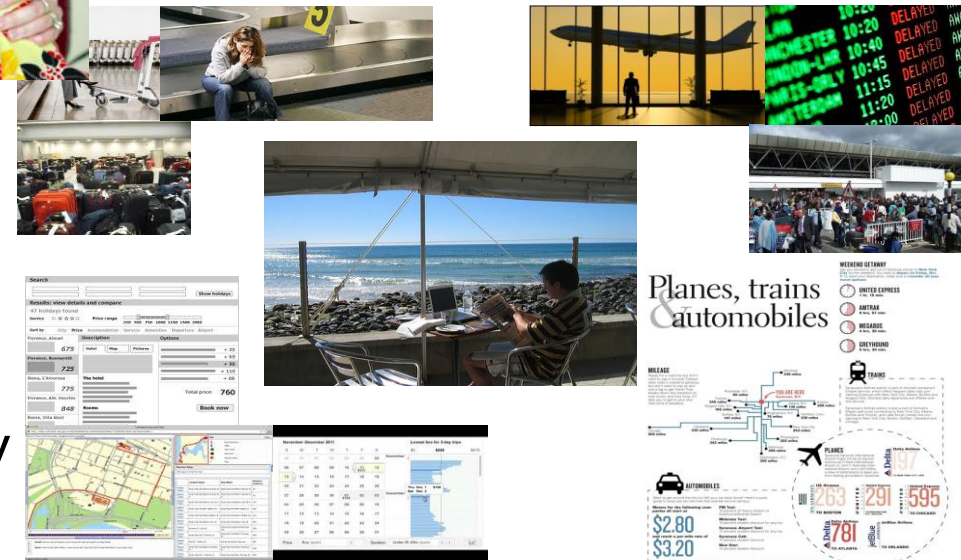
Information Broker

Research Assistant

Eco-system aware – e.g., resource manager support evolution from SemantAqua, medical eco-system – support for chronic care or end of life

Forecasting

Ultimately allowing people to find things more quickly and accurately returning answers in actionable-transparent, interactive and probable form





# Questions / Suggestions ?

The elderly of tomorrow or the x-challenged of tomorrow are us.... It just depends on how far out you look.

Lets create the semantic, actionable eco-systems to support tomorrow

Deborah McGuinness dlm @ cs. rpi . edu

Semantic assistants of the future  
allow for more leisure and remote  
monitoring / action

New forms of web assistants/agents that act on a  
human's behalf requiring less from humans  
and their communication devices...



